



We launch celebrities and brands to the metaverse

Exclusively on Binance Smart Chain - Contract Audited



# CONTENTS

## 01 WHAT'S AN NFT?

Non Fungible Token Overview & NFT Markets

## 02 INTRODUCING TRIBE

TRIBEPOP, Metaverse & Gaming

## 03 \$TRIBEX TOKEN

Exclusive on Binance Smart Chain

## 04 ROADMAP

What's next?



01

# WHAT'S AN NFT?

Non-Fungible Token Overview  
& NFT Markets



# NON-FUNGIBLE TOKENS (NFT)

A “**Non-Fungible Token**” (NFT) is an “**inimitable**” asset in the digital world that can be **bought and sold** like any other type of **property**.

Essentially, NFTs represent **immutable certificates of ownership of virtual or physical assets**.



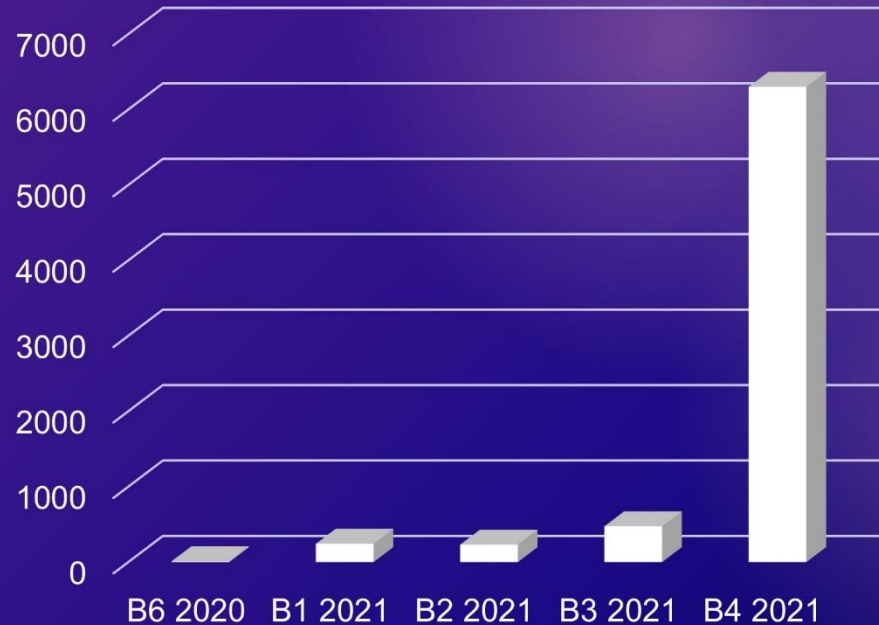
# \$ +750,000 M

According to CoinMarketCap, the NFT market currently has a capitalization of more than \$ 750,000,000,000.

# NFT MARKET GROWTH

## 1-YEAR X1000

From August 2020 to August 2021, the monthly volume grew approximately 1000 times; from 2.7 million in August 2020 to 2.9 billion in August 2021.



The values are reflected in millions of dollars.  
OpenSea Monthly Volume powered by Dune Analytics

# ADOPTION OF NFTs IN CELEBRITIES

Lionel Messi



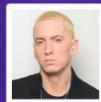
Floyd Mayweather

Elon Musk



Ellen DeGeneres

Jack Dorsey



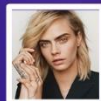
Eminem

Elton John



Snoop Dogg

Paris Hilton



Cara Delevingne

and many more...





# INTRODUCING TRIBE

Launching celebrities & brands to the *Metaverse*

# WHAT DO WE DO

TRIBE (through its \$TRIBEX token) is the first **Launchpad of NFTs validated by celebrities or brands** on the Binance Smart Chain (BSC).

At TRIBE, we launch much more than just quality NFTs validated by celebrities, projects, brands, artists, among others; **We launch TRIBEPOPs.**

"What's a TRIBEPOP?" you're surely wondering.





# WHAT'S A **TRIBEPOP**?

TRIBEPOPs are the heart of TRIBE

TRIBEPOPs are our expression, conceptualization and adaptation of different elements of the celebrity, project, brand or person of whom the collection is concerned, with a unique and distinctive style with the best quality and with the best use there is; **Metaverse**.

Yes, you read it correctly: **Metaverse**.

# TRIBEPOP + METAVERSE

We launch celebrities and brands to the metaverse

Each **TRIBEPOP** will be used within a role-playing game within our **METAVEVERSE** as skins.

We will apply the concept of **Virtual Reality** (VR) but also **Augmented Reality** (AR) being the first **AR NFT** of the entire **Binance** ecosystem.



# WHY CHOOSE TRIBE

All TRIBE and person collaborations are unique developments for this stage.

**EXCLUSIVE  
CONTENT**

**LIMITED  
EDITIONS**

As the content is exclusive, the NFTs will be limited and lower than demand.

All NFTs will be sponsored by the person who is launching them.

**AUTHENTIC  
PROPERTY**

**POWERED  
BY BINANCE**

The Binance Smart Chain enables us a fast, secure, efficient and cheap channel.

# HOW EACH COLLECTION WORKS

**Phase 0**  
Discovery



By ourselves, or by third parties, contact and negotiation with the person begins.

**Phase 1**  
Structure



The business plan is developed; Quantity of NFTs, prices and marketing structure.

**Phase 2**  
Exposure



The person collection is displayed and influencer & social media marketing begins.

**Phase 3**  
Collection



A limited number of different levels of TRIBEPOP NFT are released at fixed prices.



# WHO WE ARE



**Fede**  
CEO



**Fabrizio**  
CMO



**Tomas**  
CFO



**Agus**  
Design Team Lead



**Fede**  
Front-end Developer



**Facu**  
Full Stack Developer



**Flor**  
Graphic Design



**Astro**  
Project Manager



**Penguin**  
CTO



**Elias**  
CCO



**Diego**  
UX/UI Specialist

# PARTNERS & FOUNDERS



**FABRIZIO**

Artistic and Talent  
Representative in  
Latin America



**FEDERICO**

Former **PancakeSwap**  
Hispanic Community  
Founder



**PENGUIN**

Team Leader at  
**Wilder World**, domain  
name **ZNS** & others



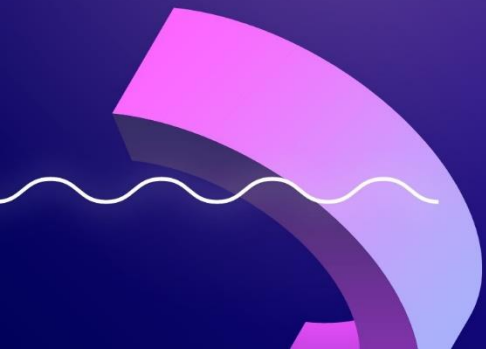


03



# \$TRIBEX TOKEN

Powered by Binance Smart Chain



# WHY YOU SHOULD OWN \$TRIBEX TOKENS



## CELEBRITY VALIDATED

A large percentage of TRIBE's net profits will go to buyback and burn \$TRIBEX tokens.



## DEFLATIONARY SYSTEM

A large percentage of TRIBE's net profits will go to buyback and burn \$TRIBEX tokens.

# WHY YOU SHOULD OWN \$TRIBEX TOKENS



## LAUNCHPAD ALLOCATIONS

Our three-tier program contemplates and weights the support of our community.



## STAKING REWARDS

Our stake pools seek to be one of the most profitable in the Binance Smart Chain (BSC).

# WHY YOU SHOULD OWN \$TRIBEX TOKENS



## METVERSE SKIN READY

All our TRIBEPOP are designed, from conception, with the horizon of being a skin in the metaverse.



## GAMIFICATION RIGGING

All of our TRIBEPOP have bone structure (rigging) ready to be used in a game.

# LAUNCHPAD ALLOCATIONS



Access to level 1 NFTs

Required staked tokens

**2,500 \$TRIBEX**

Odds Ratios

**5 out of 10**

# LAUNCHPAD ALLOCATIONS



Access to level 2 NFTs

Required staked tokens  
**17,500 \$TRIBEX**

Odds Ratios  
**7 out of 10**



# LAUNCHPAD ALLOCATIONS



Access to Exclusive NFTs

Required staked tokens  
**50,000 \$TRIBEX**

Odds Ratios  
**Guarenteed Allocation**

# ROLE OF THE TOKEN IN THE LAUNCH OF NFTS

## STAKE

Stake your TRIBEX into the pool.

## REPEAT

Insert meme:  
Very nice, Great success

## RECEIVE

Receive the NFT  
and HODL.

## FREEZE

Freeze your balance  
in the pool.

## ALLOCATION

Check and buy  
your allocation.





# \$TRIBEX TOKENOMICS

<b>CONTRACT</b>	0xc34c85a3d7a84212b6234146773f7939a931a8af
<b>NETWORK</b>	Binance Smart Chain (BEP20)
<b>TICKER</b>	TRIBEX
<b>TOTAL SUPPLY</b>	50.000.000 TRIBEX
<b>INITIAL SUPPLY</b>	5.200.000 TRIBEX
<b>INITIAL MC</b>	\$ 52.000
<b>SALE PRICE</b>	\$ 0,01 / TRIBEX
<b>INITIAL PRICE</b>	\$ 0,01 / TRIBEX



**89,60%**

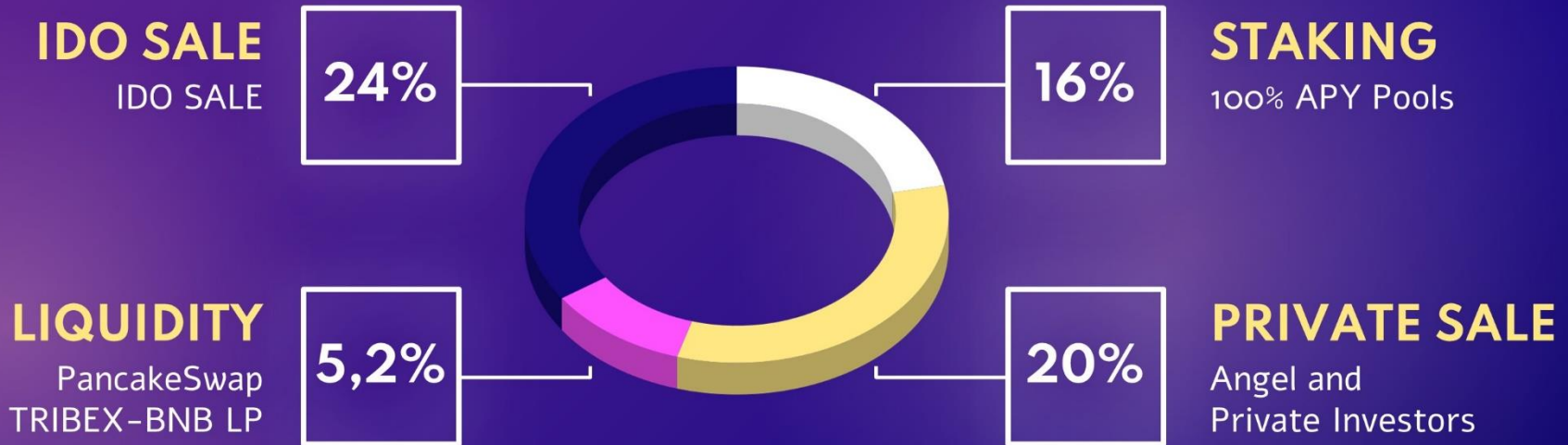
Supply vested or locked at launch

**50 M**

Total Supply



# CIRCULATING TOKEN DISTRIBUTION



Check the following page for private sale information and angel investors

# PRIVATE SALE TOKEN DISTRIBUTION



16%

## PRIVATE SALE

Capital from private investors with a vesting to settle 10% per month.



4%

## ANGEL INVESTORS

Capital received in the conception of the business model. 10% TGE – 20% mo.

# RESERVED TOKEN DISTRIBUTION



**FOUNDERS**



**TREASURY**



**PARTNERS**

"Team and Founders" tokens as well as the tokens destined for "Partners, Strategic Alliances & Marketing" and "Treasury" have an initial blocking of 2 (two) months and a vesting period for the following 10 (ten) months.

# \$TRIBEX LOCKING PERIODS



"Team and Founders" tokens as well as the tokens destined for "Partners, Strategic Alliances & Marketing" and "Treasury" have an initial blocking of two months and a vesting period for the following 10 (ten) months.

The "TRIBEX-BNB" liquidity tokens will have a 12-month block.

# CIRCULATING SUPPLY & VESTING PERIODS

		MONTHS	01	02	03	04	05	06
SALES	Public Sale		1.200 k	2.400 k	2.400 k	2.400 k	2.400 k	1.200 k
	Private Sale		400 k	800 k	800 k	800 k	800 k	800 k
	Angel Investors		200 k	400 k	400 k	400 k	400 k	200 k
DEX	TRIBEX-BNB LP		2.600 k	-	-	-	-	-
	Staking Rewards		800 k	800 k	800 k	800 k	800 k	800 k
INT	Team & Founders		-	-	500 k	500 k	500 k	500 k
	Partners-Alliances		-	-	500 k	500 k	500 k	500 k
	Treasury		-	-	740 k	740 k	740 k	740 k
<b>CIRCULATING SUPPLY</b>			<b>5.200 K</b>	<b>9.600 K</b>	<b>15.740 K</b>	<b>21.880 K</b>	<b>28.020 K</b>	<b>32.760 K</b>

"Private Sale", "Staking Rewards", "Team & Founders", "Treasury" and "Partner & Alliances" are structured in a vesting period of 12 months.



04



# ROADMAP

Join us in this growth





# 2022 ROADMAP

## Q1 2022



## Q2 2022



## Q3 2022



## Q4 2022



During all this time we will focus in parallel on bringing out quality collections (2 per month), exponential growth strategic alliances and, of course, Celebrity/Brand/Influencer marketing.



# THANKS!

Do you have any questions?

Info@TribeToken.app  
TribeToken.app

 [T.me/TribeBSC](https://t.me/TribeBSC)

CREDITS: This presentation template was created by **Slidesgo**, including icons by **Flaticon** and infographics & images by **Freepik**

